



Path To Agility[®] with SAFe 6.0[®]



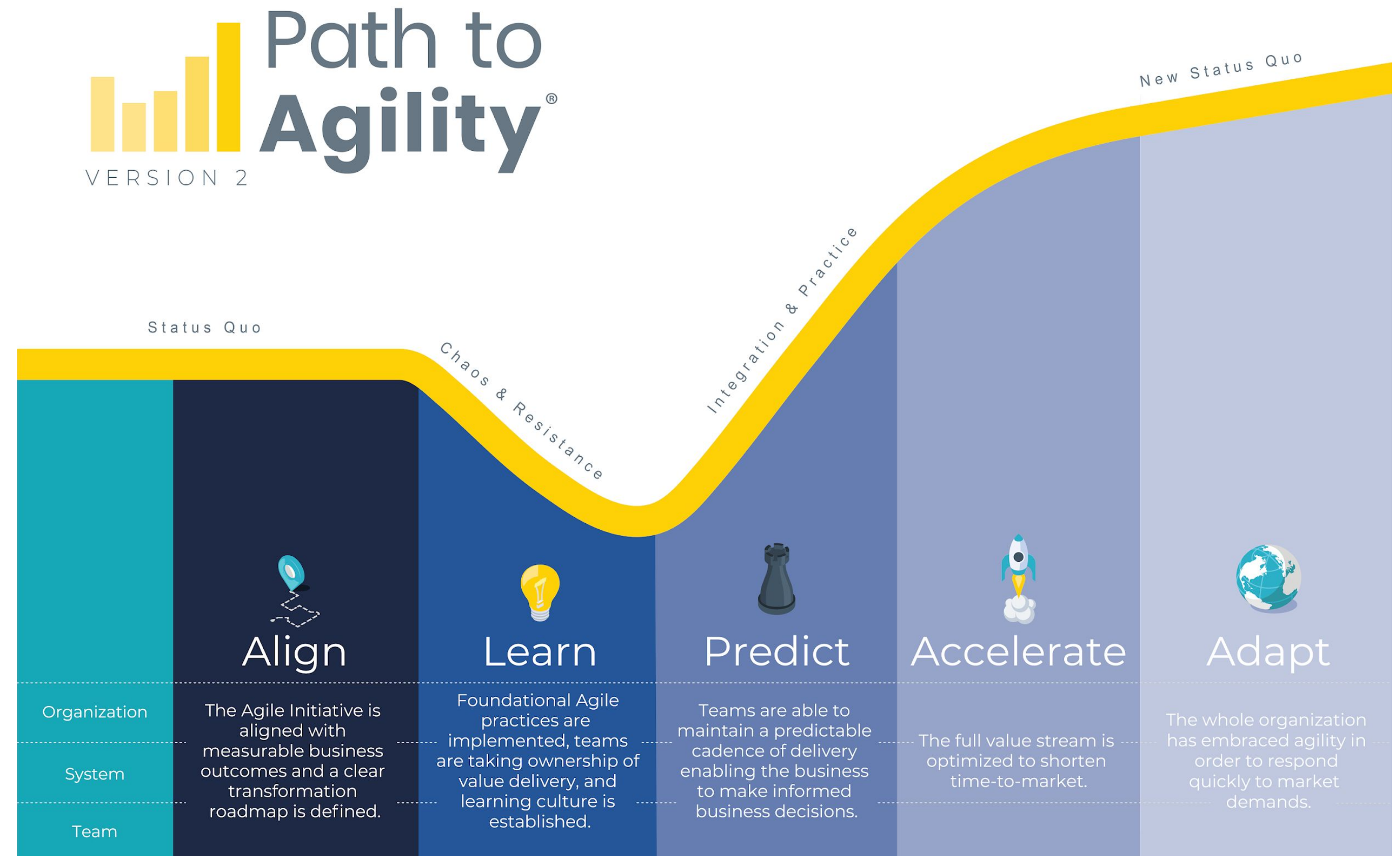
Intro

“Going Agile” or “Going SAFe” should never be the goal of a transformation. Agile Transformations should start with desired outcomes instead.

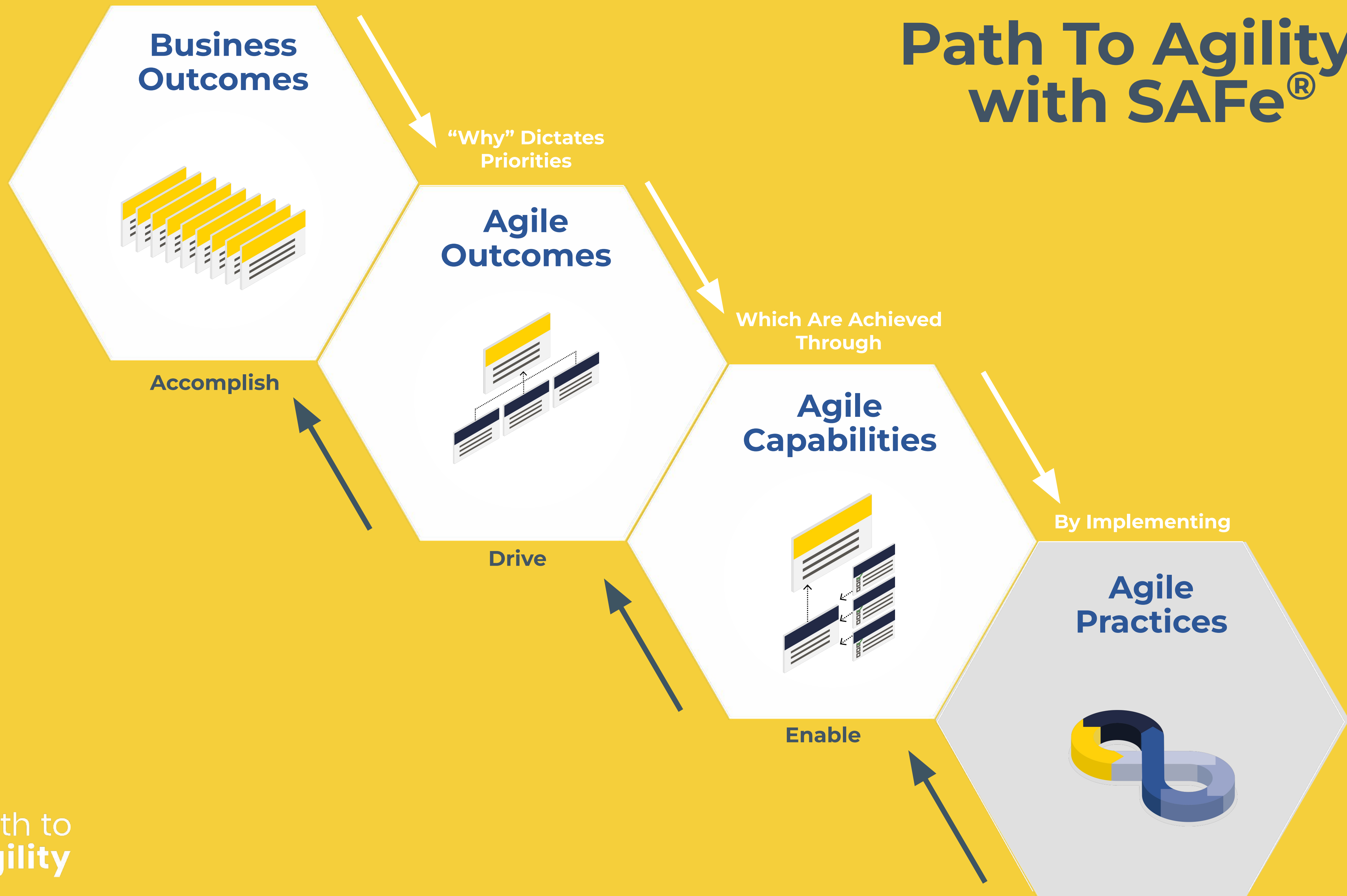
Path to Agility[®] is a proven Agile Transformation approach designed to help accelerate an organization’s journey toward results. It identifies where to focus efforts, why, and how to measure.

There are 3 elements to Path to Agility:

1. Business Outcomes
2. Agile Outcomes
3. Agile Capabilities



Path To Agility[®] with SAFe[®]



Path to Agility *with* SAFe®?

Path to Agility is a holistic approach to transformation at scale based on achieving measurable results. We recommend using Path to Agility *to complement* scaling frameworks such as SAFe.

Here's why....

- Path to Agility works in non-scaling *and* scaling situations, is compatible with SAFe, and is agnostic to the scaling framework being used (i.e. SAFe, Nexus, Scrum@Scale, LeSS, DAD, etc.).
- Like SAFe, Path to Agility recognizes that successful transformation requires change at all levels of the enterprise
- Path to Agility is a capabilities model. It describes abilities, roles, functions, and levels of an organization needed to accomplish results
- Path to Agility is not prescriptive--it does not identify what practice is needed. Leaders know their organization (people, culture, environment) best. They understand what practices are needed for the capability at hand. Path to Agility gives agility leaders flexibility and choice
- Whole organization may not be using SAFe. Those parts of the organization can still benefit from a capabilities model or approach like Path to Agility
- The Scaled Agile roadmap is comprehensive. However, this can lend itself to a “Big-Bang” approach to scaling agility. If an organization is not ready for an exhaustive approach, Path to Agility can help organizations plan for incremental change with measurements.
- Path to Agility can visualize and measure progress at any stage of the journey

Path To Agility[®] With SAFe[®]



Status Quo

Align

Chaos & Resistance

Learn

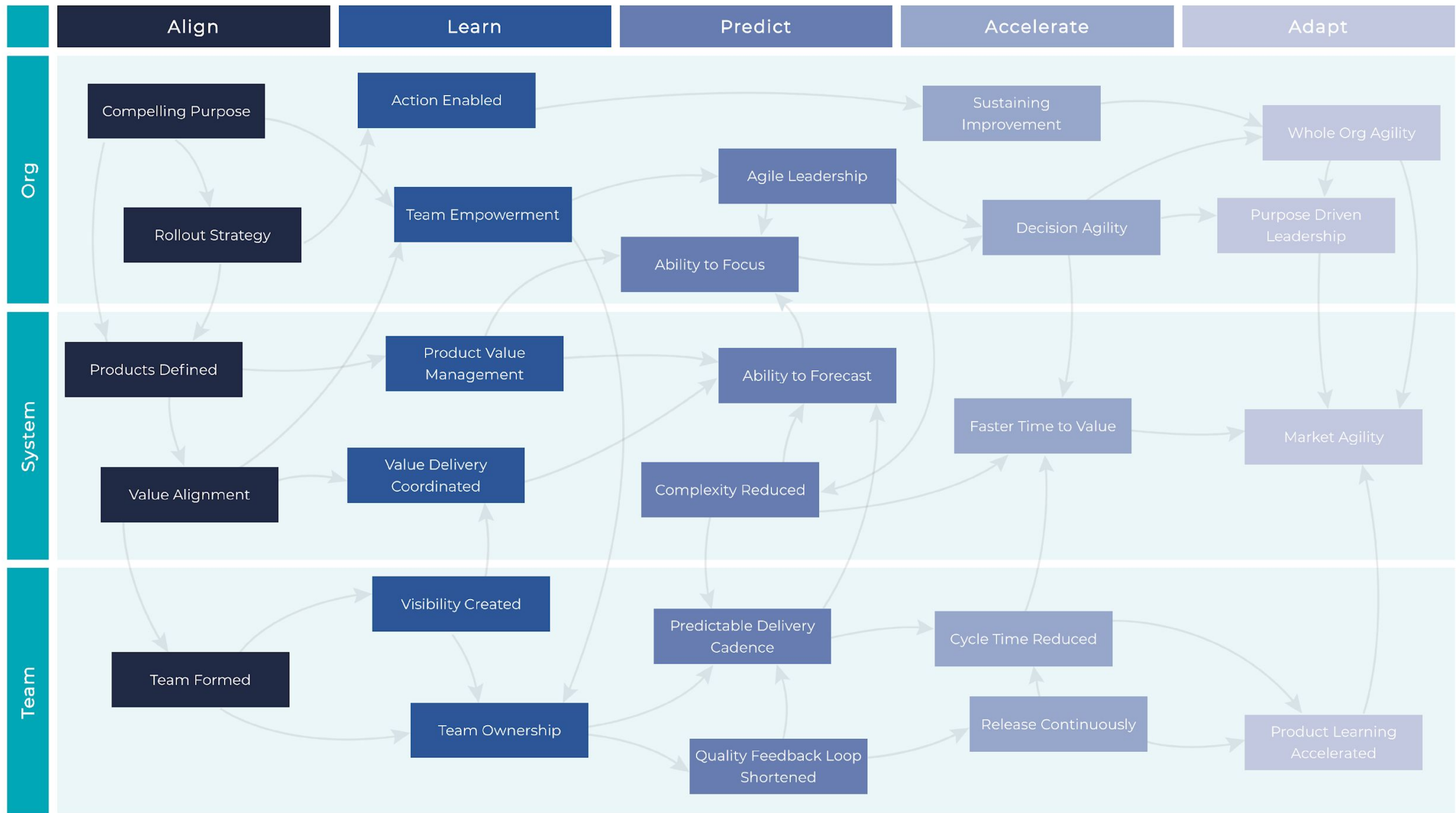
Predict

Integration & Practice

Accelerate

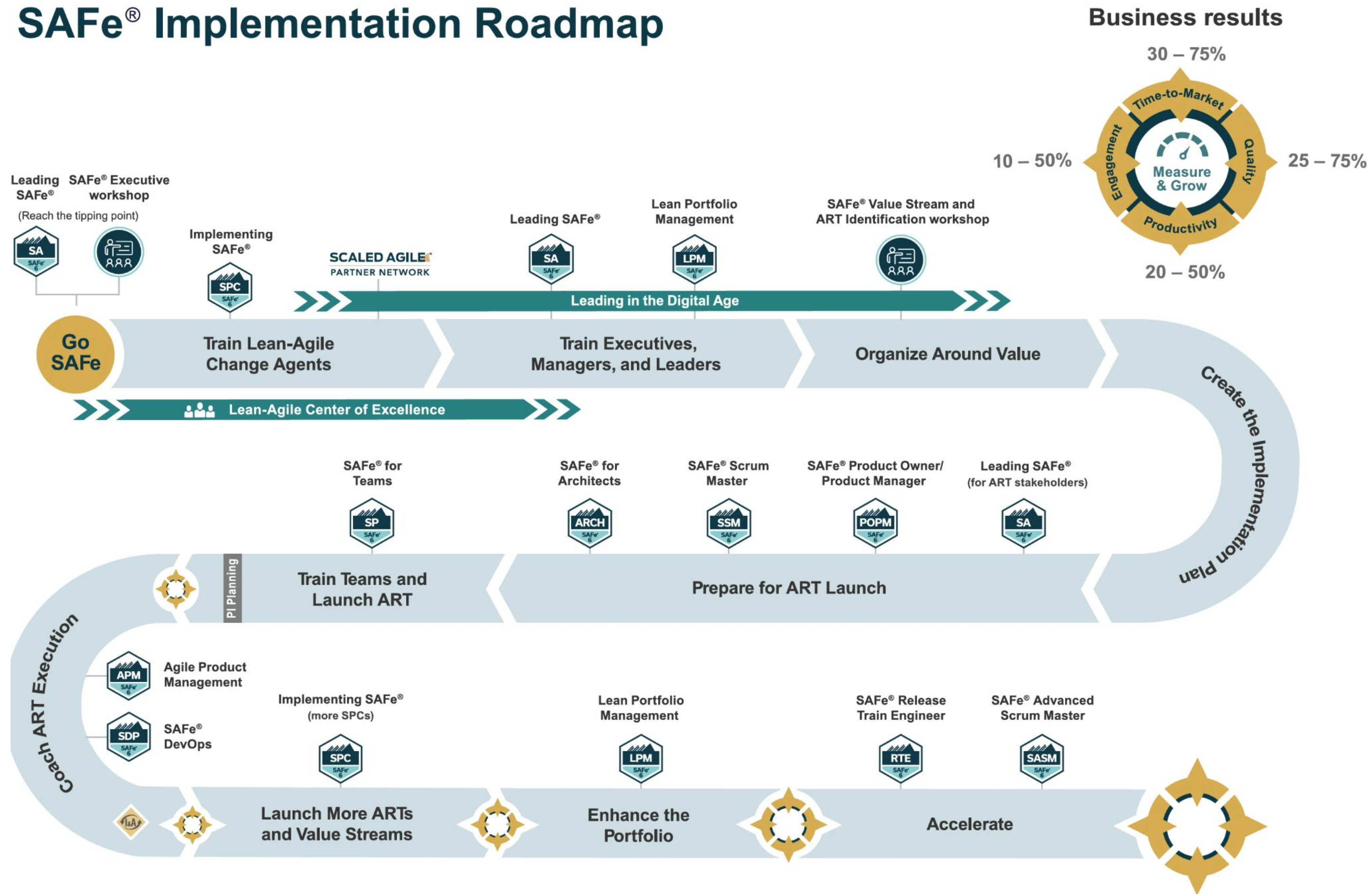
Adapt

New Status Quo



SAFe® Implementation Roadmap

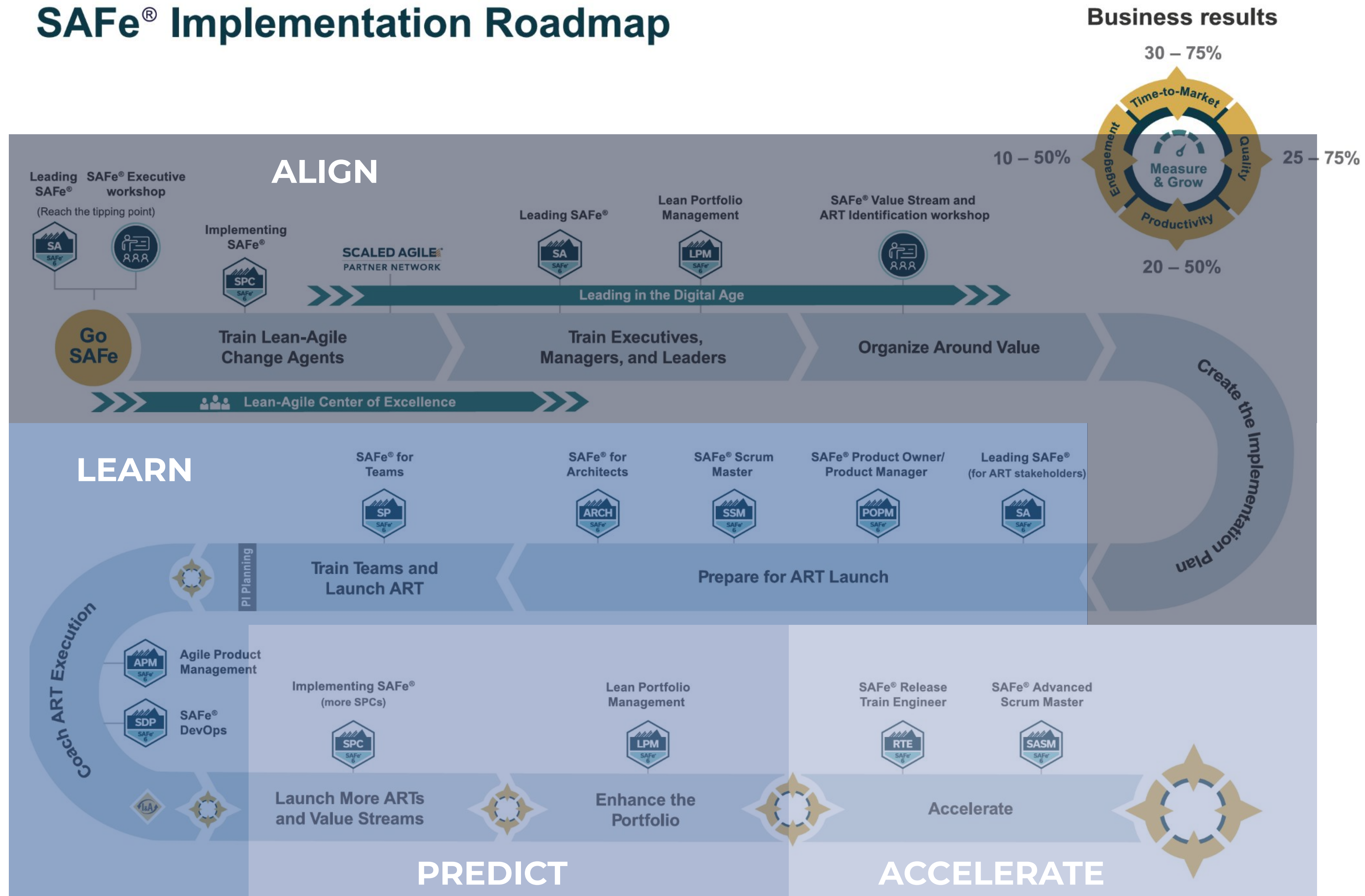
SAFe® Implementation Roadmap



SAFe defines an implementation roadmap for organizations undergoing a Lean-Agile transformation.

Path to Agility® & SAFe® Compatibility

SAFe® Implementation Roadmap



Path to Agility stages are compatible with the SAFe implementation roadmap.

Portfolio SAFe®

SAFe 6.0

Select SAFe configuration

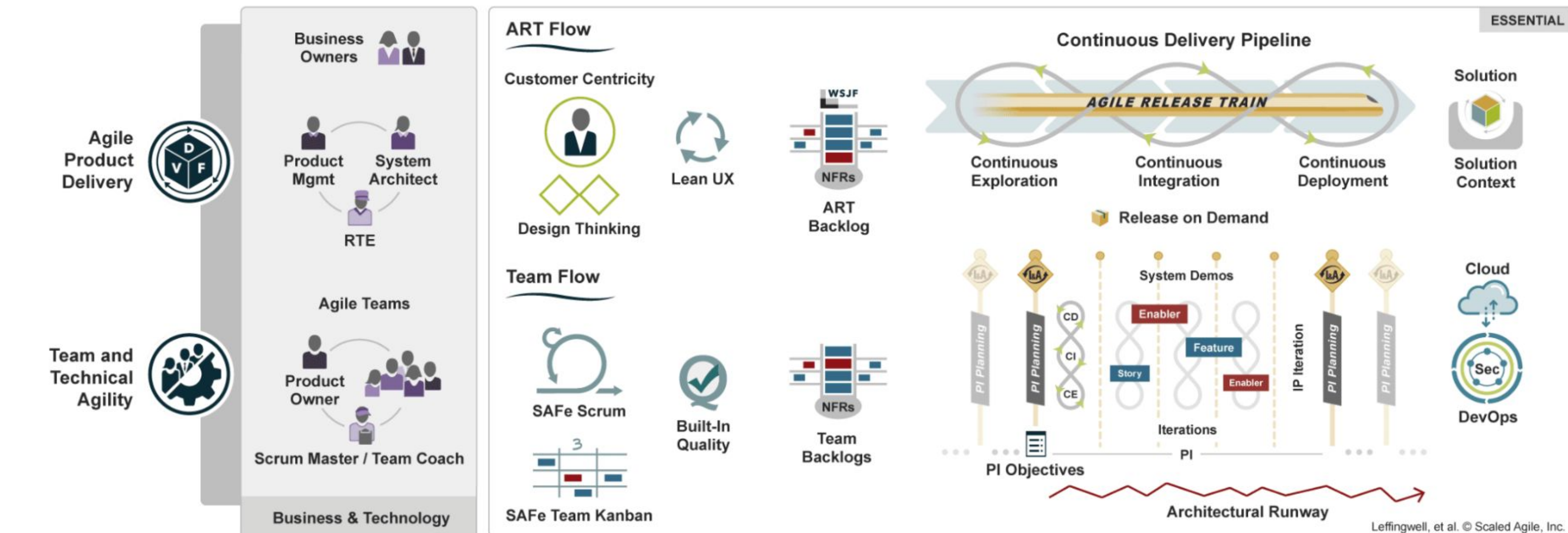
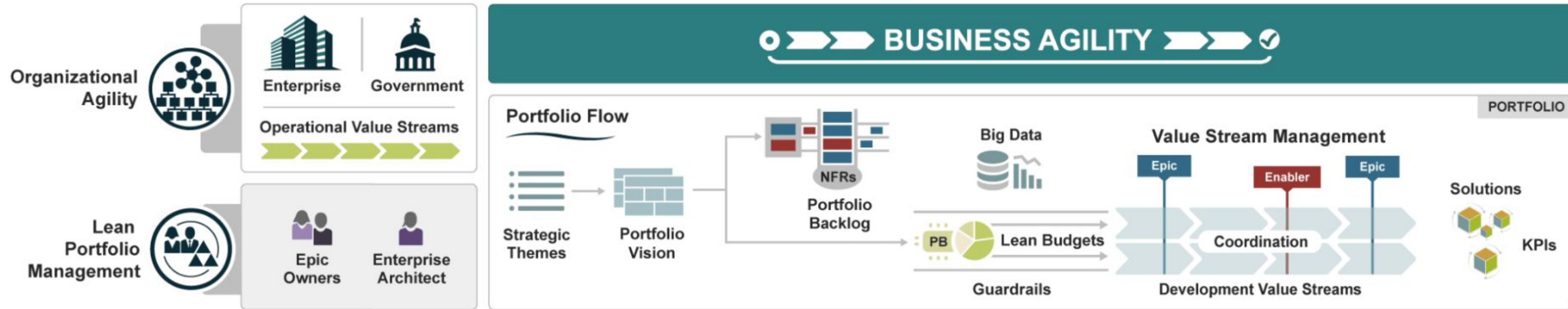
OVERVIEW

ESSENTIAL

LARGE SOLUTION

PORTFOLIO

FULL



Organizational Agility



Lean Portfolio Management



Agile Product Delivery



Team and Technical Agility



Vision

OKRs

Roadmap

AI

Shared Services

CoP

System Team

Measure & Grow

Lean-Agile Leadership



Lean-Agile Mindset

Core Values

SAFe Principles

Implementation Roadmap

SPC



Continuous Learning Culture

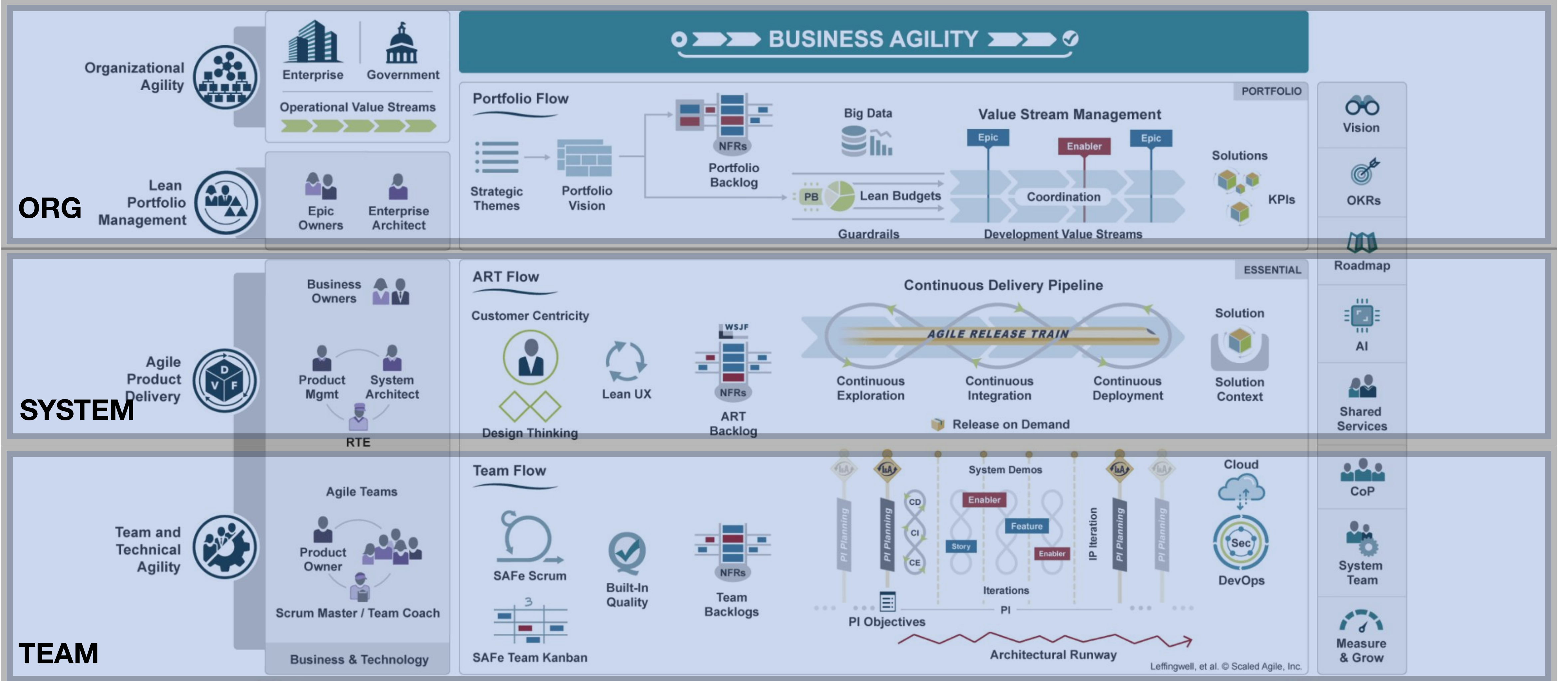
Leffingwell, et al. © Scaled Agile, Inc.

Path to Agility[®] with SAFe[®] Compatibility

SAFe 6.0

Select SAFe configuration

- OVERVIEW
- ESSENTIAL
- LARGE SOLUTION
- PORTFOLIO
- FULL



Leffingwell, et al. © Scaled Agile, Inc.



**Learn more about
the Path to Agility
approach.**

Follow Path to Agility for updates

Twitter: @Path_to_Agility

LinkedIn: <https://www.linkedin.com/company/path-to-agility>